



## USER PROFILE WIZARD 2.5



## USER GUIDE

**ForensiT Limited, 1 Britannic House, 40 New Road, Chatham, Kent, ME4 4QR, England.  
Tel: US 1-877-224-1721 (Toll Free) Intl. +44 (0) 1634 817776 Fax: +44 (0) 870 751 7118**

# Contents

## INTRODUCING USER PROFILE WIZARD

### INSTALLATION

<b>Installing</b>	<b>5</b>
<b>Setup Type</b>	<b>6</b>
<b>Licensing</b>	<b>7</b>
<b>Deployment Files</b>	<b>8</b>

### MIGRATING USER PROFILES WITH USER PROFILE WIZARD

<b>Welcome</b>	<b>9</b>
<b>User Account Information</b>	<b>9</b>
<b>Select a User Profile</b>	<b>11</b>
<b>Configuring Profile</b>	<b>14</b>
<b>Congratulations!</b>	<b>14</b>

### FREQUENTLY ASKED QUESTIONS

<b>What does the User Profile Wizard do?</b>	<b>15</b>
<b>What's a profile?</b>	<b>15</b>
<b>So why would I want to share a profile?</b>	<b>15</b>
<b>Why share profiles when migrating to a Windows domain?</b>	<b>15</b>
<b>Why not make everyone an Administrator?</b>	<b>16</b>
<b>Why not just copy the data from the old profile?</b>	<b>16</b>
<b>Will I have to visit every machine on my network to run the Wizard?</b>	<b>16</b>
<b>What version of Windows does the User Profile Wizard run on?</b>	<b>16</b>
<b>Is there a version for Windows NT?</b>	<b>17</b>
<b>Can I use the User Profile Wizard with Fast User Switching?</b>	<b>17</b>
<b>And the User Profile Wizard is FREE?</b>	<b>17</b>
<b>What if I have a problem?</b>	<b>17</b>
<b>What are the security implications of running the User Profile Wizard?</b>	<b>17</b>
<b>I'm getting "Access denied" when I try to open some of my folders.</b>	<b>18</b>
<b>What about my encrypted data?</b>	<b>18</b>
<b>What about group membership?</b>	<b>18</b>
<b>What's the Command Line mode for?</b>	<b>18</b>
<b>How does User Profile Wizard handle roaming profiles?</b>	<b>18</b>
<b>I've deleted a profile can User Profile Wizard help?</b>	<b>19</b>

## **U S I N G T H E C O M M A N D L I N E**

<b>Command Line Parameters</b>	<b>20</b>
<b>Building a Command Line</b>	<b>26</b>

## **C R E A T I N G E N T E R P R I S E M I G R A T I O N S C R I P T S U S I N G T H E U S E R P R O F I L E W I Z A R D D E P L O Y M E N T K I T**

<b>Introduction</b>	<b>28</b>
<b>Scenario</b>	<b>29</b>
<b>Getting Started</b>	<b>29</b>
<b>Step 1 - Welcome</b>	<b>29</b>
<b>Step 2 - Domain Information</b>	<b>30</b>
<b>Step 3 - Domain Administrator</b>	<b>31</b>
<b>Step 4 - Workstation Information</b>	<b>32</b>
<b>Step 5 - Existing Domain</b>	<b>34</b>
<b>Step 6 - User Account Options</b>	<b>35</b>
<b>Step 7 - Run Options</b>	<b>38</b>
<b>Step 8 - Script Options</b>	<b>40</b>
<b>Step 9 - Follow on Script</b>	<b>42</b>
<b>Step 10 - Congratulations!</b>	<b>44</b>

## **T R O U B L E S H O O T I N G**

<b>Windows creates a temporary profile</b>	<b>46</b>
<b>Finding Domain Controller Fails/ "The RPC server is unavailable"</b>	<b>47</b>

## **E N D U S E R L I C E N S E A G R E E M E N T**

# Introducing User Profile Wizard

## *Why User Profile Wizard?*

A User Profile is where Windows stores your stuff. It is where your Desktop, “My Documents”, “My Pictures” and “My Music” files are all saved. Your User Profile is also where Windows keeps all the information that makes your computer personal to you, like your desktop wallpaper, Internet favorites and the lists of documents you've recently opened.

As the Windows operating system has developed, User Profiles have become ever more important and are now an integral part of the way that Windows organizes data. In some circumstances however, this tying of data to a single user account can be a problem.

As businesses grow, IT requirements change. You might need to reconcile multiple NT domains into a single Windows Active Directory; you may need to move from a Novell Directory Services (NDS) network to a Windows domain; or you may be connecting your standalone computers to a domain for the first time. When you join your machine to your new domain Windows will create a new profile for you and you lose all your data and settings.

This is the problem User Profile Wizard solves. ForensiT User Profile Wizard is a workstation migration tool that will join your machine to a domain, and share your original user profile with your new domain logon so that you can carry on using all your existing data, and keep the same settings that you've always had.

This user guide is designed to introduce you to what User Profile Wizard can do. For example., by using the User Profile Wizard Deployment Kit you can build a scaleable, enterprise solution to migrate tens of thousands of workstations, each with multiple user profiles.

User Profile Wizard has been developed to save you time, effort and money. We hope you like it.

# Installation

## *Installing User Profile Wizard*

You should run the User Profile Wizard setup program on a single “Administrator” machine. The setup program will install the User Profile Wizard application files and documentation, together with the User Profile Wizard Deployment Kit. You can then copy and distribute the User Profile Wizard application files.

**The only files you need to run User Profile Wizard are Profwiz.exe and Profwiz.exe.manifest. You do NOT need to run the setup program on all the machines you want to migrate.**

## Installing

To install User Profile Wizard run the setup program.

The setup program can install both the User Profile Wizard and the User Profile Wizard Deployment Kit.

**The ForensiT User Profile Wizard Deployment Kit is a .NET application and requires the Microsoft .NET Framework Version 1.1 (or above) to be installed on your computer.**

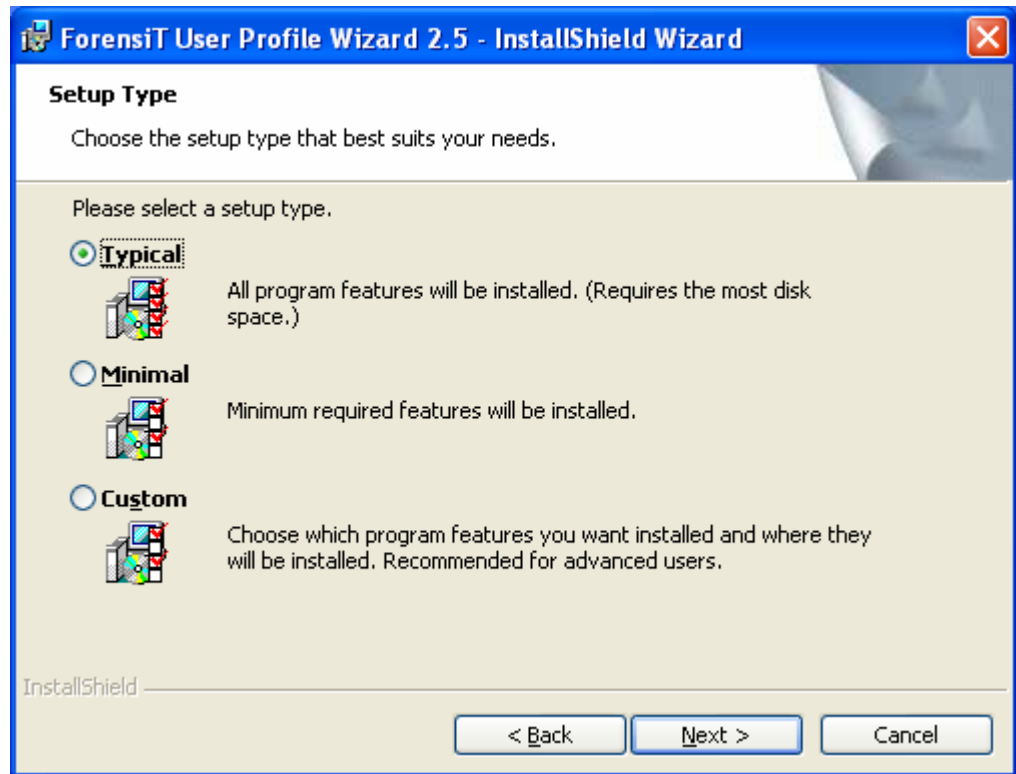
If the .NET Framework is not installed on your computer you will see an “Application Error” when you try to run the software.

The .NET Framework can be downloaded free of charge from Microsoft at <http://www.microsoft.com/downloads/details.aspx?FamilyID=262d25e3-f589-4842-8157-034d1e7cf3a3&displaylang=en>

The *User Profile Wizard User Guide*, installed with User Profile Wizard, is a PDF file. If you need PDF reader software, you can download it free of charge from the Adobe website at <http://www.adobe.com/products/acrobat/readstep2.html>

## Setup Type

During the installation you can choose the setup type.



If you choose the “Typical” setup type, the User Profile Wizard application files and documentation will be installed, together with the User Profile Wizard Deployment Kit. This is the recommended installation.

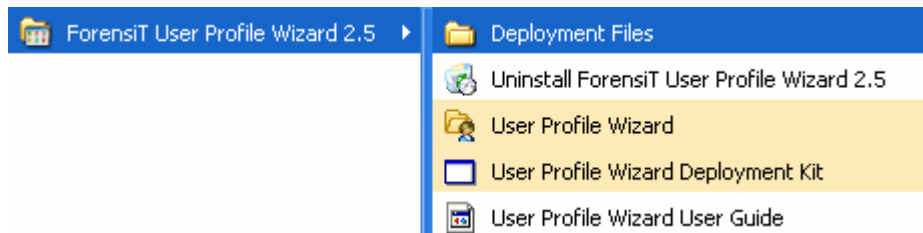
If you choose the “Minimal” setup type, only the User Profile Wizard application files and documentation will be installed.

If you choose the “Custom” setup type, you can manually choose not to install the User Profile Wizard Deployment Kit.

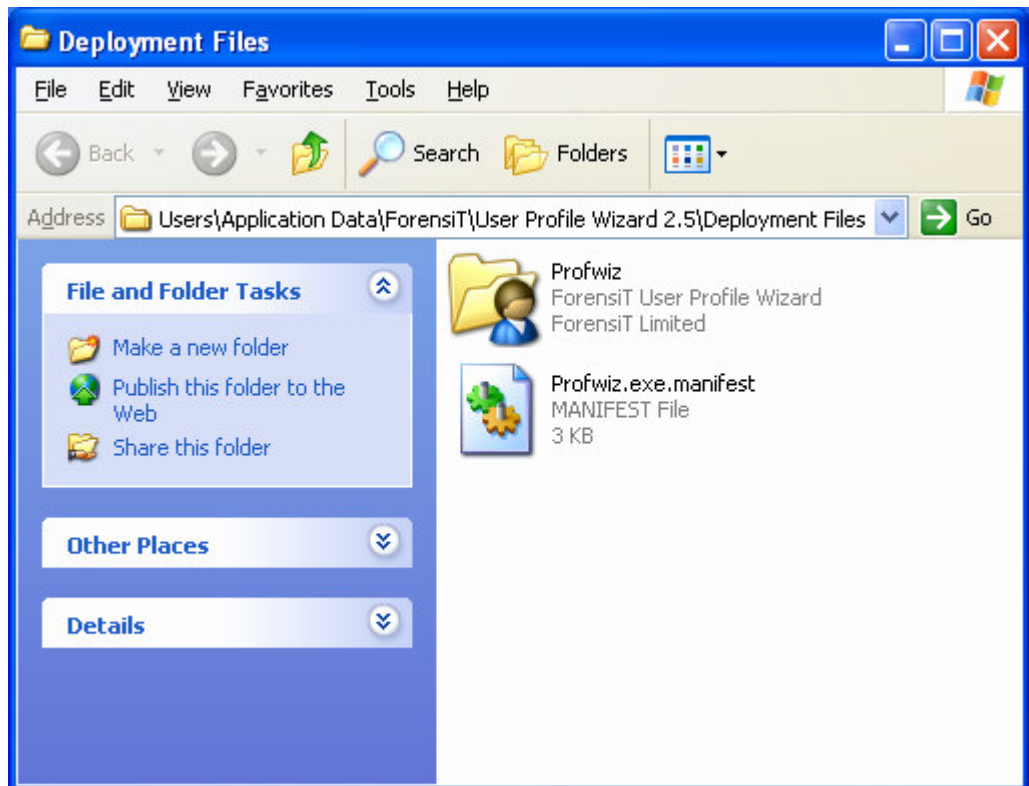
## Licensing

When you purchase the User Profile Wizard you will be sent a link by email to download the license manifest file. To license the User Profile Wizard you simply need to copy the license file into the same folder as the User Profile Wizard executable file, Profwiz.exe.

To copy the license file, click the “Start” button, then choose “All Programs”, then “ForensiT” and “ForensiT User Profile Wizard 2.5”. Click “Deployment Files” to open the Deployment Files folder.



Copy your license manifest file into the folder.



## **Deployment Files**

To run the User Profile Wizard on another machine you just need to copy the Profwiz.exe and Profwiz.exe.manifest files. No other files are required.

The Profwiz.exe and Profwiz.exe.manifest files can be copied to any convenient location, such as a USB memory flash drive (memory stick or pen drive), a network share, a CD or a floppy disk .

# Migrating User Profiles with User Profile Wizard

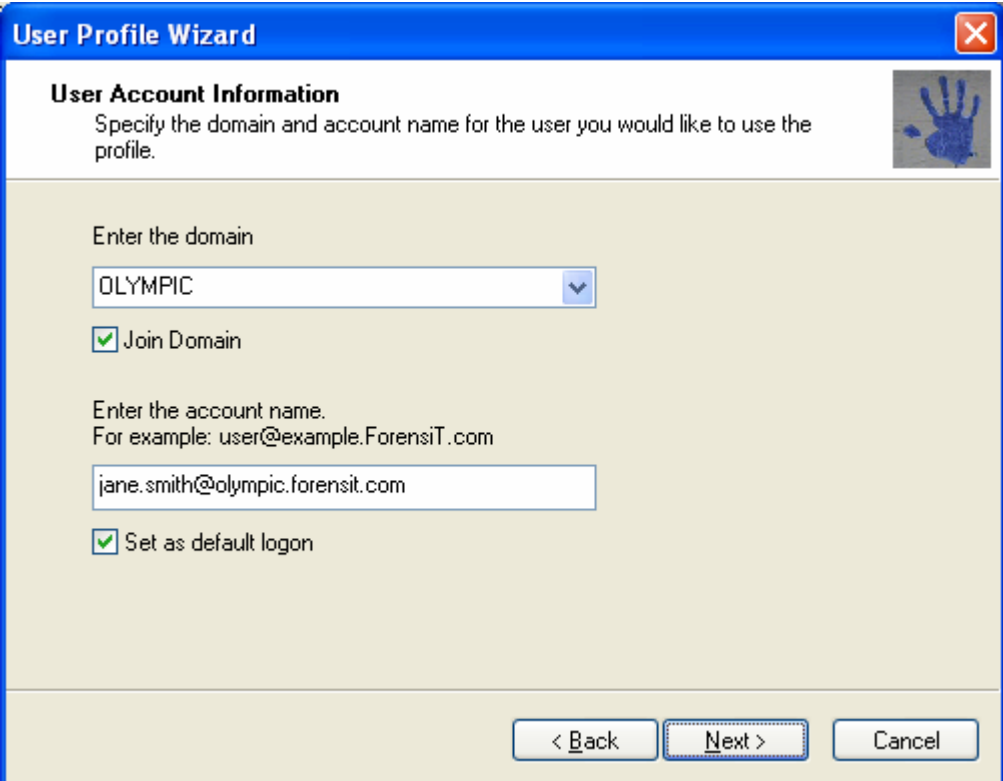
*This chapter will show you how to use the Wizard to share an existing user profile so that it can be used by another user account.*

## Welcome

When you start User Profile Wizard the first thing you see is the Welcome page. Click **Next** to continue.

## User Account Information

This is the page where you enter information about the new user who will be given access to an existing profile.



The screenshot shows a Windows-style dialog box titled "User Profile Wizard" with a close button in the top right corner. The main heading is "User Account Information" with a small hand icon to the right. Below the heading is the instruction: "Specify the domain and account name for the user you would like to use the profile." The form contains two sections. The first section is "Enter the domain" with a dropdown menu showing "OLYMPIC" and a small downward arrow. Below this is a checked checkbox labeled "Join Domain". The second section is "Enter the account name. For example: user@example.ForensiT.com" with a text input field containing "jane.smith@olympic.forensit.com". Below this is another checked checkbox labeled "Set as default logon". At the bottom right of the dialog are three buttons: "< Back", "Next >", and "Cancel".

## MIGRATING USER PROFILES

### Enter the domain

Enter the domain of the user account that will be given access to the existing profile.

If your machine is already joined to a domain, the domain name will appear in the "Enter the domain" combo box, if not the box will be blank.

If you are joining your machine to a new domain, type the new domain name in the "Enter the domain" box..

You can also choose the local machine name by clicking on the down arrow. This will allow you to share a profile with a local user account if you want to.

### Join Domain

If your machine is not already joined to a domain, or if you enter a new domain name, the "Join Domain" check box is checked by default. Remove the tick if you do **not** want the machine to be joined to the domain you have specified.

### Enter the account name

In the "Enter the account name" text box enter the new user's account name. This should be in UPN (User Principle Name) format, for example, user.name@mydomain.domain.com. Alternatively you can specify a plain NT account name like "jsmith".

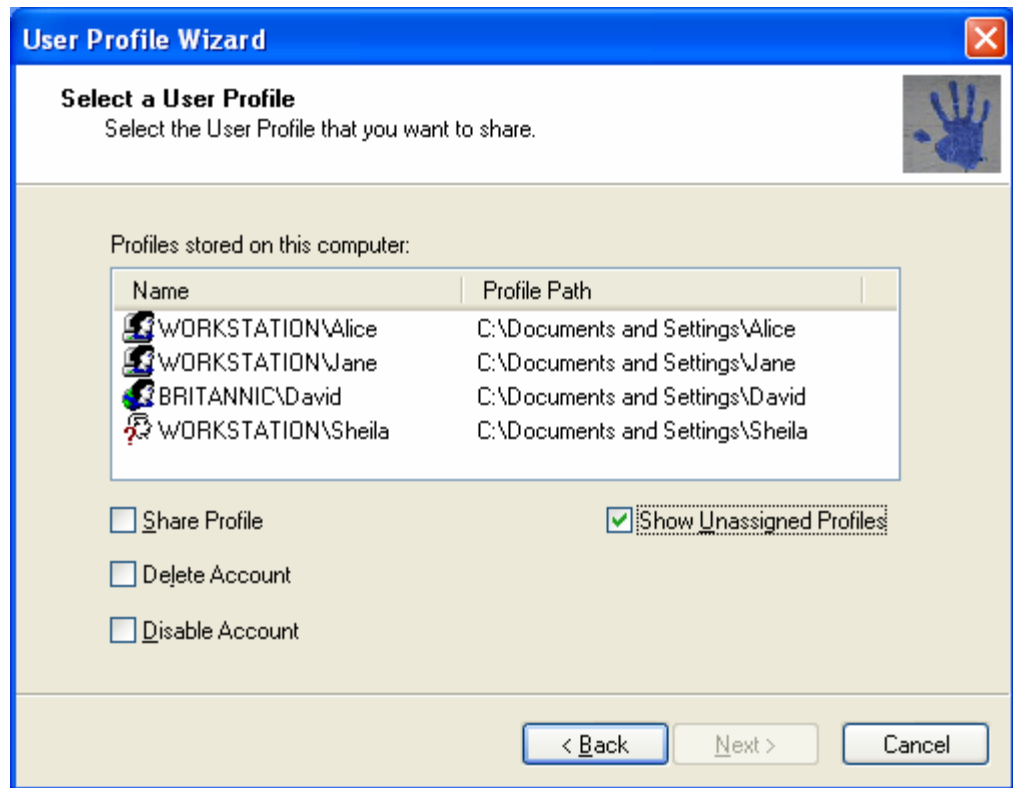
### Default Logon

By default the Wizard will set the account you specify to be the default logon on your machine. Remove the tick in the "Set as default logon" text box if you do not want the default logon to change.

Click **Next** to continue.

## Select a User Profile

This is the page where you select the existing profile that the new user account will use.



The User Profile Wizard lists the profiles assigned to each user account. You just need to select the account name of the user whose profile you want to share.

### Share Profile **(New for version 2.5)**

The User Profile Wizard does **not** share profiles by default. The User Profile Wizard is primarily a migration tool; this means that it will configure a user's existing profile so that it will be used by their new account. The user's old account will no longer use the profile. If you want two accounts to use the same profile you **must** check the "Share Profile" check box. (Before doing this, you may want to refer to "Windows creates a temporary profile" in the "Troubleshooting" section below.)

If someone logs on with their old account after their profile has been migrated, and the "Share Profile" checkbox was not checked, Windows will create a new profile for the old account and the user will not see their familiar desktop, etc.

## MIGRATING USER PROFILES

If you forget to check the “Share Profile” checkbox when migrating a user profile, don’t worry! You can always run the Wizard again to share the profile with the original user account

If a profile needs to be used regularly by more than one user, we would recommend that you use our User Profile Manager product.

### **Unassigned Profiles**

The User Profile Wizard lists the currently assigned profile: that is, the profile that each user is currently using. Note that this is not necessarily the user's original profile.

For example, say that Jane and Alice share a machine. Alice workshares with Jane, and they decide that they both want to share Jane's profile. After the User Profile Wizard has run, Jane's profile will be assigned to both Jane and Alice. The profile path listed for Jane and Alice will therefore be the same. What happens to Alice's profile? The answer is nothing. The profile stays on the machine, but it is not used by anyone, it is "unassigned." To list these unassigned profiles, tick the "Show Unassigned Profiles" box. The first time you do this, you will get a warning. This is because profiles sometimes become corrupted so that Windows cannot read them. When this happens Windows creates a new profile for a user. If you look in the profiles directory, usually "Documents and Settings", you will sometimes see profile folders with names like USER.DOMAIN. These are profiles Windows has created because it cannot read the user's original profile. It is obviously not a good idea to use a corrupted profile, and the User Profile Wizard warns you of the possibility.

The User Profile Wizard lists unassigned profiles with the unknown user icon. It will also list the profiles for user accounts that have been deleted from the machine. In this case, the actual user name is not available and you will only see the user account SID (Security Identifier.)

The User Profile Wizard will always try to resolve the domain and account associated with a particular profile. However, this is not always possible - for example, if a domain is no longer available on the network. In these circumstances you should be able to work out the profile you want to share by looking at the profile path.

### **Delete Account**

If the profile you have selected is currently assigned to a local account, you can tell the wizard to delete the account after the migration is completed by checking the “Delete Account” checkbox.

## MIGRATING USER PROFILES

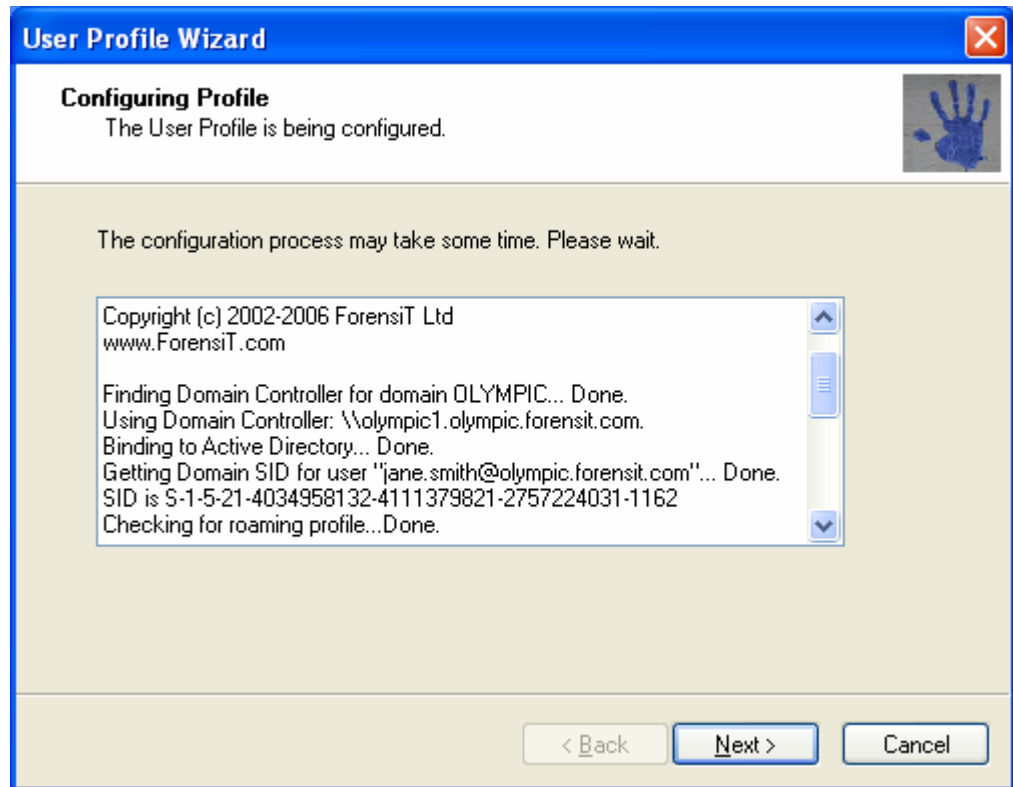
### **Disable Account**

If the profile you have selected is currently assigned to a local account, you can tell the wizard to disable the account after the migration is completed by checking the “Disable Account” checkbox.

When you're ready, click **Next** to continue

## Configuring Profile

As soon as you click Next the configuration process begins. The User Profile Wizard will update the progress window at each stage.



If you are joining your machine to the domain you will be prompted for a username and password with the necessary permissions.

When configuration is complete click **Next**.

## Congratulations!

You're done. If there were any problems, you can click **Back** and check the progress window for errors. Click **Finish** to close the Wizard.

If the Wizard has joined your machine to the domain you specified you will be prompted to reboot.

## Frequently Asked Questions

*This chapter gives answers some commonly asked questions..*

### What does the User Profile Wizard do?

The User Profile Wizard allows different Windows users to share the same profile on a machine.

### What's a profile?

A profile is where Windows keeps all your personal data and settings. Your profile is where your "My Documents", "My Pictures" and "My Music" files are stored, and where your Internet favorites and cookies are kept. Windows keeps track of your personal settings in your profile, like your desktop wallpaper and the lists of documents you've recently opened. Most of the changes you make to personalize your applications are also kept in your profile, as well as files like dictionaries and playlists.

### So why would I want to share a profile?

If your reading this you probably already have an idea why sharing a profile could be useful. Perhaps you are a developer or a consultant who logs onto to different domains and you don't want to have to set up your machine to the way you want it each time. (You won't have to reenter all your favorite web site passwords either.) You may be a systems administrator trying to set up a machine for people who workshare and who want to have all the same settings. However, one of the main reasons you might want to share profiles is if your company is migrating to a Windows domain - perhaps from a Novell network, for example.

### Why share profiles when migrating to a Windows domain?

As far as Windows is concerned, when you logon to your machine using your domain logon you are a completely different person. Because Windows thinks you're a different person, it sets up a new profile for you and you lose all your personal settings. Not only that, unless your new domain account has Administrator rights on your machine, you lose access to all your data as well. What the User Profile Wizard allows

## FREQUENTLY ASKED QUESTIONS

you to do is share your original profile with your new domain logon so that you can carry on using your old settings. This is a major benefit to your users. Installing a Windows Domain infrastructure is a major undertaking but, believe it or not, your end users won't be as excited about it as you: all they want to do is get on with their jobs. Using the User Profile Wizard will significantly reduce disruption to your business

### **Why not make everyone an Administrator?**

Running as an Administrator would give you access to your old documents, but you would still lose your personalized settings. More importantly, always using your machine with an Administrator account is a bad idea. Making everyone in your organization an Administrator is a seriously bad idea. There are major security risks with this sort of setup. For example, any executable file sent in an email, or any component installed from a web page has complete access to your machine and the data on it. Not only that, but making everyone an administrator is a really good way of pushing up your IT support costs.

### **Why not just copy the data from the old profile?**

Well, you could. But that is going to be a time consuming, labor intensive, not say costly operation. What data do you copy? Even if you copy all your files, what about the configuration information that Windows stores in the registry? Using the User Profile Wizard is just much easier and much less disruptive.

### **Will I have to visit every machine on my network to run the Wizard?**

Absolutely not. The User Profile Wizard has two distinct modes of operation. You can run the Wizard in graphical mode like all the other Wizards you're familiar with in Windows, but you can also run the User Profile Wizard from a command line . This means that the User Profile Wizard can be run from a VB or Java Script, or from a batch file. With the User Profile Wizard Deployment Kit you can build a scaleable, enterprise solution to migrate tens of thousands of workstations. Running the User Profile Wizard from a command line is only possible if you have the Corporate Edition of the User Profile Wizard

### **What version of Windows does the User Profile Wizard run on?**

The User Profile Wizard runs on Windows 2000 , Windows XP ,and Windows Vista.

## Is there a version for Windows NT?

There is a version of the Corporate Edition of User Profile Wizard available for Windows NT. Corporate customers and organizations should contact [sales@ForensiT.com](mailto:sales@ForensiT.com) for more information.

## Can I use the User Profile Wizard with Fast User Switching?

You can still use the User Profile Wizard to share a profile. However, Windows cannot load the same profile for two users at the same time. This means that if you attempt to switch to a user account that shares a profile with an account that is already logged on, you will get an error. In this situation Windows will create a temporary profile for the account.

## And the User Profile Wizard is FREE?

The User Profile Wizard is **free for personal use**, subject to the terms of the End User License Agreement. To request an evaluation copy of the Corporate Edition, and for pricing information, corporate customers and organizations should contact [sales@ForensiT.com](mailto:sales@ForensiT.com). Your organization will pay no more than \$2 per seat for the Corporate Edition.

## What if I have a problem?

Regrettably there is no support available for the free version of the wizard. The software has been extensively tested, and we have done our best to make it error free. However, if you do come across any bugs or limitations we would really like to know about them. Email us at [support@ForensiT.com](mailto:support@ForensiT.com) if you do.

## What are the security implications of running the User Profile Wizard?

By running the Wizard you are giving someone access to someone else's data and settings. This means that they will be able to read the person's documents, look at the person's Internet favorites and history, see their lists of recent files, etc. If two (or more) people are sharing a profile then they will all see the same data when they log on. Note that this only applies to data local to the machine: data on other machines, like servers, will still not be accessible. However, with the exception of updating group memberships when joining a domain, this is as much (or as little) as the User Profile Wizard does: it does not change any other security settings.

## **I'm getting "Access denied" when I try to open some of my folders.**

The wizard does not "reflow" rights on profile folders, nor does it scan your machine for explicitly defined permissions on files or folders. This means that any specific user rights assignments that you have made will remain in place. Remember, if you're logging onto a machine with a domain account you're a different person as far as Windows is concerned, and if your domain account hasn't been given any rights to a particular folder, running the User Profile Wizard won't change anything.

## **What about my encrypted data?**

The user account that has been given access to a profile will not be able to read any files or folders encrypted by the original owner of that profile. If you're migrating to a Windows domain and you want your new domain account to access your encrypted data, you will need to decrypt your data using your old account, and then encrypt it again when you logon with your new account.

## **What about group membership?**

When migrating to a domain, the User Profile Wizard automatically adds the account that will share the profile to the same groups as the local account whose profile you want share. This is to help in the migration to the domain. So for example, if your local machine account is a member of the "Power Users" group, the User Profile Wizard will add your domain account to the "Power Users" group. If you are sharing profiles between local accounts, group membership is not effected.

## **What's the Command Line mode for?**

The Command Line is designed specifically for organizations who are migrating large numbers of workstations to a new Windows domain. To this end it has a number of additional options not available in graphical mode.

## **How does User Profile Wizard handle roaming profiles?**

User Profile Wizard works with the local copy of any domain profile. If users on the old domain have roaming profiles, a copy of their profile will be held locally on their machine. User Profile Wizard will configure this existing local profile so that it can be used by their new domain account. After the user has logged on with their new domain account (in fact when they first log off) Windows will synchronize the local copy with the domain copy on new domain in the normal way.

## **I've deleted a profile can User Profile Wizard help?**

User Profile Wizard is able to recover the profiles of deleted accounts, however, it is not a file recovery tool. If the user's profile has been physically deleted from the machine, the Wizard can't recover it.

If a user account is deleted, its associated profile becomes orphaned, so that even if you recreate the account, Windows will not allow you to reuse the old profile. The Wizard solves this by letting you assign the orphaned profile to the new account using the "Show Unassigned Profiles" option on the "Select a User Profile" page.

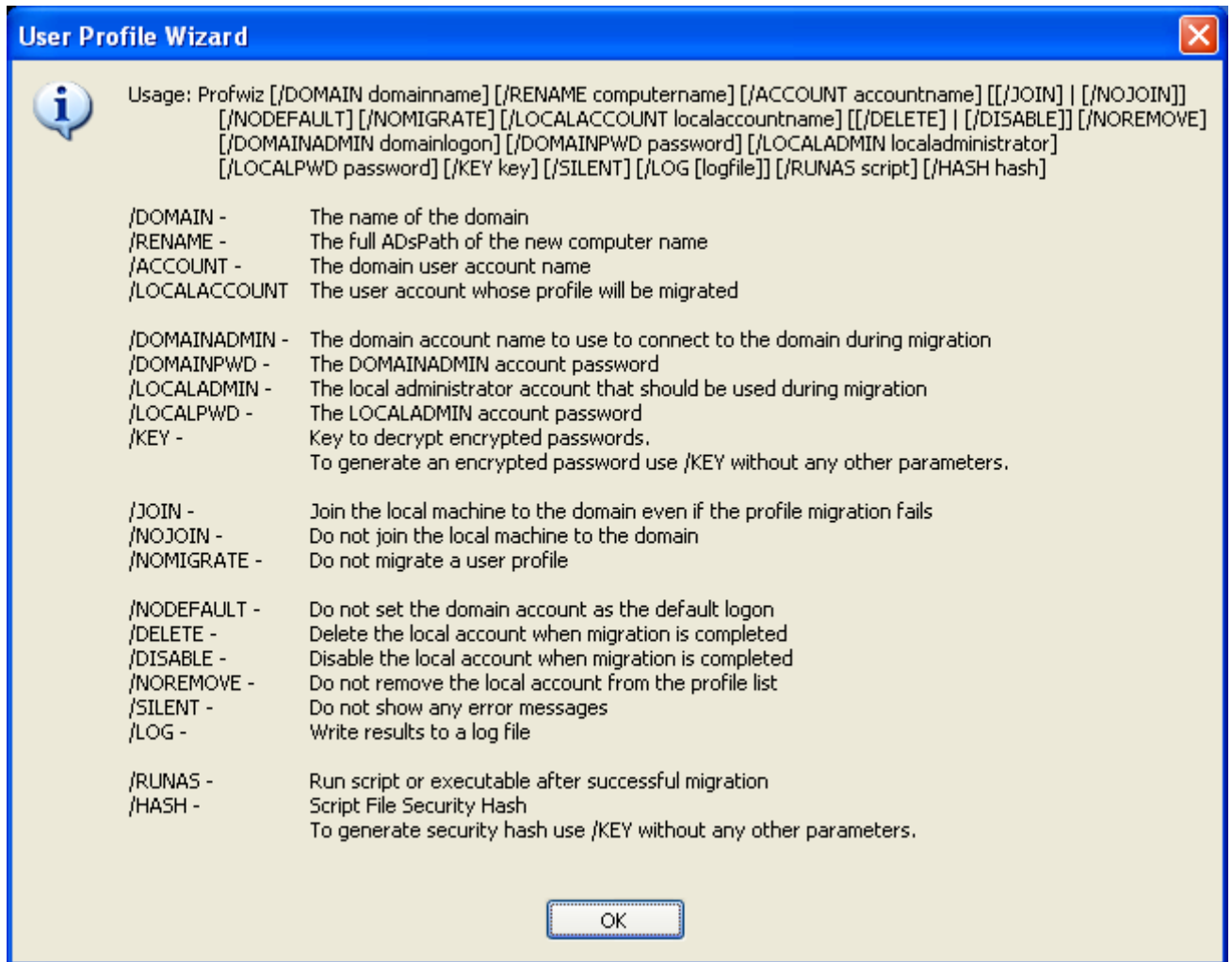
If the profile has been physically deleted, you can use one of the file recovery programs that are widely available in the market, and then use the "Show Unassigned Profiles" option to assign it back to the original user.

# Using the Command Line

*This Chapter details User Profile Wizard's powerful command line interface that will enable you to automate an enterprise-wide migration of your workstations to a new domain.*

## Command Line Parameters

Type **Profwiz /?** at a command prompt and you will see the following screen:



In this section we will describe each command line parameter in turn.

## USING THE COMMAND LINE

### **/DOMAIN domainname (Optional)**

The name of the domain of the user account that will be given access to a profile.

If you do not specify a domain name, User Profile Wizard will look for ACCOUNT on the local machine.

### **/RENAME computername (Optional)**

Rename the computer, or add computer to a specific AD container.

You can use the /RENAME switch in two situations. Firstly, as part of your migration to a Windows domain you may simply want to rename your workstations. Secondly, you may not want your Workstations to be in the default "Computers" container in Active Directory when they join the domain. In either situation you must specify the full ADsPath of the new computer name after the switch. For example, if you want a computer to be in a container called "Workstations" you would type the following:

```
/RENAME CN=Workstation1,OU=Workstations,DC=uk,DC=forensit,DC=com
```

### **/ACCOUNT accountname**

The name of the account that will be given access to an existing profile.

### **/LOCALACCOUNT localaccountname (Optional)**

The account whose profile will be shared.

This can be a domain account whose profile is stored locally. To specify a domain account use the format Domain\User. If you do not specify the LOCALACCOUNT parameter, User Profile Wizard will migrate the profile of the current logged on user.

### **/DOMAINADMIN domainadmin (Optional)**

The name of an account with the necessary permissions to add the machine to the DOMAIN.

### **/DOMAINPWD password (Optional)**

The DOMAINADMIN account password, either in plain text or encrypted by a KEY.

## USING THE COMMAND LINE

### **/LOCALADMIN localadmin (Optional)**

The name of a local administrator account.

User Profile Wizard must be run with Administrator privileges. Using the LOCALADMIN parameter you can specify a local administrator account to run User Profile Wizard.

As an example, a common way to migrate a machine is to call User Profile Wizard from a logon script. The logon script runs in the security context of the user who may well not have administrator privileges on their machine. By using the LOCALADMIN parameter you can provide alternate administrator credentials.

Because by default domain administrators have local administrator privileges, if the machine is already a member of a domain, you can specify a domain administrator account from the current domain as follows:

```
/LOCALADMIN OLD_DOMAIN\Administrator
```

### **/LOCALPWD password (Optional)**

The LOCALADMIN account password, either in plain text or encrypted by a KEY.

### **/KEY key (Optional)**

The key to decrypt encrypted DOMAINPWD and LOCALPWD passwords.

To generate an encrypted password use /KEY without any other parameters.

Having plain text passwords in your script files is not good security practice. To help you avoid this, User Profile Wizard gives you the option of encrypting your DOMAINADMIN and LOCALADMIN passwords. To do this, run the wizard with just the /KEY switch, for example:

```
C:\>profwiz /KEY
```

This will bring up the “Generate an Encrypted Password” wizard (see below.)

Enter the plain text password in the “Enter the password” text box.. If you want the User Profile Wizard to run a script or program after the migration is complete, you can enter the path in the text box. For more information see “/HASH” below. Finally, enter a “key” word that User Profile Wizard will use to encrypt and decrypt the password – this should be completely unrelated to the password to stop anyone guessing what the password might be. Click “Next”

The encrypted password is generated in the “encrypted password” window on the next page, and a secure hash of any script or file you want to run is generated in the “file hash” window.

## USING THE COMMAND LINE

If you are encrypting both a DOMAINADMIN and a LOCALADMIN password, you **must** use the **same** key.



### **/JOIN (Optional)**

Join the local machine to the domain even if the profile migration fails.

### **/NOJOIN (Optional)**

Do not join the local machine to the domain.

### **/NOMIGRATE (Optional) (New for version 2.5)**

If you are performing an enterprise-wide domain migration, you may have some machines that you want to join to your new domain which don't have any profiles you want to migrate. By using the /NOMIGRATE switch you can script the User Profile Wizard to migrate these machines without needing to call on any other tools.

## USING THE COMMAND LINE

### **/NODEFAULT (Optional)**

Do not set the domain account as the default logon

### **/DELETE (Optional)**

Delete the local account when migration is completed

If LOCALACCOUNT is a user account local to the machine, you can use /DELETE to delete it.

### **/DISABLE (Optional)**

Disable the local account when migration is completed

If LOCALACCOUNT is a user account local to the machine, you can use /DISABLE to disable it.

### **/NOREMOVE (Optional) (New for version 2.5)**

Do **not** remove LOCALACCOUNT from the profile list.

The User Profile Wizard does **not** share profiles by default. The User Profile Wizard is primarily a migration tool; this means that it will configure a user's existing profile so that it will be used by their new account. The user's old account will no longer use the profile. If you want the original account to continue to use the profile you must use the /NOREMOVE switch. (Before doing this, you may want to refer to "Windows creates a temporary profile" in the "Troubleshooting" section below.)

Note that if you do use the /NOREMOVE switch there will be two entries in the machine profile list (one for the new user account and one for the original user account) both pointing to the same profile. Sometimes, this can be confusing. For example, if someone goes back and deletes the profile for the original user, the profile for the new user will be deleted as well: it is the **same** profile.

### **/SILENT (Optional)**

Do not show any error messages

**/LOG logfile (Optional)**

Write results to a log file.

This is highly recommended. Should you ever need to contact ForensiT Support regarding a migration issue, we will always ask you for your log file.

If you use the /LOG switch without specifying a logfile, a log file will be created in your “My Documents” folder.

**/RUNAS (Optional) (New for version 2.5)**

If you are performing an enterprise-wide domain migration, there may well be configuration changes you want to make to your workstations which have nothing to do with migrating user profiles or joining the machine to the new domain. It is also almost certain that any configuration changes you do want to make will require local administrator permissions. The User Profile Wizard has a secure mechanism for passing the local administrator account and password via the /LOCALADMIN, /LOCALPWD and /KEY parameters. By using the /RUNAS parameter you get User Profile Wizard to securely run any vbscript or executable file for you in the security context of a local administrator account.

**/HASH (Optional) (New for version 2.5)**

Just passing a script or executable to the User Profile Wizard to run is not secure. Scripts might be edited, or executable files replaced by a malicious user wishing to run their own code on a workstation. To stop this happening, you should use the /HASH parameter to pass a security hash of the file you want to run.

The security hash guarantees that **only** the file you specify gets run - unchanged. If a script is altered *at all* – even by a single character – the User Profile Wizard will not run it.

To generate a security hash, run the User Profile Wizard with just the /KEY parameter and specify the script or executable you want to run. (See above.)

## Building a Command Line

The User Profile Wizard command line is very powerful, and can look daunting if you are unfamiliar with it. In this section we will show you just how easy it is to build a command line to automate the migration of user profiles.

Here's the simplest command line you can use:

```
Profwiz /ACCOUNT Alice
```

What this command line does is to tell User Profile Wizard to share my profile with Alice who has a local account on my machine. When Alice logs on, she will use my profile. It is my profile that gets shared because I'm the user logged on and running the Wizard.

That was easy, but it wasn't very realistic. What if I want Alice to share Bob's profile? In this case I just need to tell User Profile Wizard to migrate Bob's profile:

```
Profwiz /ACCOUNT Alice /LOCALACCOUNT Bob
```

That's OK, but we are still dealing with local user accounts. What if we want Alice to log on using her domain account and share her existing user profile? Let's say that Alice's new account is on the "Olympic" domain and is called "alice.smith". In this case the command line would be:

```
Profwiz /DOMAIN OLYMPIC /ACCOUNT alice.smith /LOCALACCOUNT Alice
```

For all its simplicity, this command line is quite powerful. If the machine is not already joined to the Olympic domain, User Profile Wizard will automatically join the machine to the domain after Alice's existing profile has been configured for Alice to use with her new domain account.

We are now starting to get somewhere, but our example is still quite artificial. User Profile Wizard is running in my security context. For the command line to work, I would have to be both a local administrator and have the necessary rights on the Olympic domain to join the machine. This is just about possible, but somewhat unlikely. It is much more likely that I need to specify a domain admin account and password that can join the machine to the domain:

```
Profwiz /DOMAIN OLYMPIC /ACCOUNT alice.smith /LOCALACCOUNT Alice /DOMAINADMIN domainadmin /DOMAINPWD password
```

## USING THE COMMAND LINE

We're looking good. However, what if I am not sat at the machine logged in as a local administrator? What if I want to run User Profile Wizard from a logon script from a old Novell NDS network, or an old NT 4.0 domain? In these circumstances, I would need to specify a local administrator account for User Profile Wizard to use. The command line would then look like this:

```
Profwiz /DOMAIN OLYMPIC /ACCOUNT alice.smith /LOCALACCOUNT  
Alice /DOMAINADMIN Administrator /DOMAINPWD password  
/LOCALADMIN localadmin /LOCALPWD password
```

Of course, having your domain and local administrator passwords left in plain text in your script is a really bad idea. Instead, we'll encrypt them and specify our encryption key, which in this case is "secret":

```
Profwiz /DOMAIN OLYMPIC /ACCOUNT alice.smith /LOCALACCOUNT  
Alice /DOMAINADMIN Administrator /DOMAINPWD  
FB4ED868A55DDA05D18CB2E8C8A74B55 /LOCALADMIN localadmin  
/LOCALPWD 57507F76456B0EA3F77ACFD11560707F /KEY secret
```

(To see how to encrypt passwords look in the "Command Line Parameters" section above.)

Finally, it is always a really good idea to create a log file for the migration. We'll create a log file on a network share using the computer name:

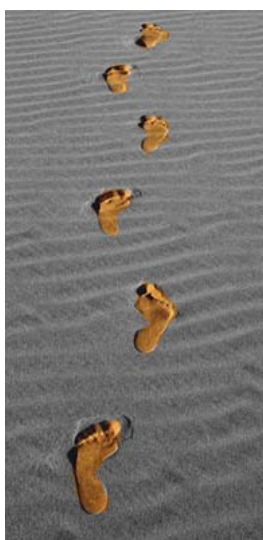
```
Profwiz /DOMAIN OLYMPIC /ACCOUNT alice.smith /LOCALACCOUNT  
Alice /DOMAINADMIN Administrator /DOMAINPWD  
FB4ED868A55DDA05D18CB2E8C8A74B55 /LOCALADMIN localadmin  
/LOCALPWD 57507F76456B0EA3F77ACFD11560707F /KEY secret /LOG  
\\Server\Share\%COMPUTERNAME%.log
```

That's it! The job's done. We've seen how to build up a command line to automatically migrate a machine to a new domain and have our user, Alice, continue to use her existing profile when she logs on with her new domain account.

# Creating Enterprise Migration Scripts using the User Profile Wizard Deployment Kit

*The User Profile Wizard Deployment Kit is able to generate vbscripts based on your specific migration requirements. This chapter shows you how.*

## Introduction



To harness the full capabilities of ForensiT User Profile Wizard you need to run it with the command line interface. In the past running an application using a command line interface meant creating a DOS batch file. However, batch files are fundamentally limited in terms of flexibility and functionality.

ForensiT strongly recommends that you use Windows Scripting to run the User Profile Wizard from a command line. Windows Script is a comprehensive scripting infrastructure for the Microsoft Windows platform and is built into all versions of Windows supported by ForensiT User Profile Wizard.

The User Profile Wizard Deployment Kit is able to generate a Visual Basic Script (VBScript) to run the User Profile Wizard based on your specific migration requirements. It can generate a very simple script that will just migrate the currently logged on user's profile, or it can create scripts to migrate all the profiles on a workstation, lookup the new account names, add the machine to a specific Active Directory OU, and securely run another configuration script or executable file.

The User Profile Wizard is a workstation based migration tool. To migrate a workstation, the User Profile Wizard must be run on the workstation. Typically, the User Profile Wizard will be run from a logon script on the user's **old** domain. In these circumstances, the script will run when the user logs onto their old domain; the User Profile Wizard will configure the user's profile so that it can be used by their new domain account; the User Profile Wizard will then join the machine to the new domain and reboot. When the User logs on with their new account on their new domain their desktop, "My Documents" folder, etc. will be unchanged.

## Scenario

To show just what the Deployment Kit can do, we will run through a typical migration scenario. It is important to note that this is just one scenario: for example, the Deployment Kit will also generate scripts to migrate workstations from Windows Active Directory domains and Novell networks, or migrate workstations to Samba networks.

*Bob needs to migrate all his Windows workstations from his company's old NT 4.0 domain called TITANNIC, to a new Active Directory domain called OLYMPIC. (Maybe the old domain keeps going down...) Some of the company workstations are used by different people, so all the profiles will need to be migrated. Additionally, some of the names of the workstations do not conform to the company's naming policy, and these workstations will need to be renamed before joining the new domain.*

## Getting Started

The User Profile Wizard Deployment Kit is installed with the User Profile Wizard if you chose the "Typical" setup type when you run the installer. To run the Deployment Kit click the Windows "Start" button and goto to "All Programs", then "ForensiT" and "ForensiT User Profile Wizard 2.5."

## Step 1 - Welcome



When you start the User Profile Wizard Deployment Kit the first thing you see is the Welcome page. Click **Next** to continue.



## Step 2 - Domain Information

**Domain Information**  
Enter information about the new domain

Are you migrating to a new domain?

Yes  
 No

Enter the name of the new domain:  
olympic.corp.com

Join Domain

< Back   Next >   Cancel   Help

### Are you are migrating to a new domain?

Just Yes or No.

### Enter the name of the new domain

Type the name of the new domain into the text box.

### Join Domain

If you the want the workstation to join the new domain after the users profiles have been migrated, check the “Join Domain” check box.. This is the default.

*Bob needs to join his workstations to the new domain, so he chooses “Yes” and enters the new domain name. He leaves the “Join Domain” checkbox checked.*

## Step 3 - Domain Administrator



The User Profile Wizard needs to have the credentials of an account with the necessary permissions to join the workstation to the new domain.

**ForensiT User Profile Wizard Deployment Kit - Step 3 of 10**

**Domain Administrator**  
Enter credentials for accessing the new domain.

Enter name of an account with the necessary permissions to access the domain. This can be a NT account name such as FORENSIT\Administrator or a UPN name, such as Administrator@ForensiT.com.

Enter account name:

Enter Password:

< Back    Next >    Cancel    Help

### Enter account name

Type the name of the account in the new domain with permissions to join the machine to the domain. This does not need to be a Domain Admin account; the account only needs permissions to query Active Directory, create a computer account in the OU you choose, and join the workstation to the domain. You may want to create a special account for your migration.

### Enter Password

Type the password for the account. The Deployment Kit will automatically encrypt the password for you.

**Note:** Step 3 will not be available if you are not migrating to a new domain.

*Bob is using the "Migrate" account in the OLYMPIC domain.*

## Step 4 - Workstation Information



### Enter AdsPath

You can add your workstations to the Active Directory OU of your choice. You can type in the full AdsPath in the AdsPath textbox, or click the “Browse” button to browse for the OU in Active Directory.

**Note:** You will only be able to browse for the OU in Active Directory if the workstation you are using is already joined to the new domain.

### Use Lookup file to get new computer names

The VBScript that the User Profile Wizard Deployment Kit generates is capable of looking up the new workstation name in a simple comma-separated text file ( a .CSV file.) Items in the .CSV file just need to be entered as follows:

```
Computer1,New_ Computer Name1
Computer 2, New_ Computer Name2
```

If you need to rename your workstations and want the script to look up the new computer name, check the “Use Lookup file” checkbox.

**Enter lookup file path**

If you check the “Use Lookup file” checkbox, the “Enter lookup file path” textbox becomes active. Type the path to the lookup file in the textbox, or click the browse button to select the file.

Remember that the lookup file needs to be accessible by the user who is logged onto the workstation. For this reason, it should be on a network share on the **old** domain - or on the old Novell network if you are migrating from Novell. All users will need read access to the share. You should also avoid using mapped drive paths: use UNC paths instead.

**Note:** Step 4 will not be available if you are not migrating to a new domain.

*Bob wants to put his company’s workstations in a “Workstations” container in the OLYMPIC domain Active Directory, rather than in the default “Computers” container. To get the script to do this he adds the AdsPath of the “Workstations” OU in the AdsPath textbox.*

*Bob needs to rename some of his workstations, so he enters the path to the lookup file. The lookup file, “Names.csv”, is in a network share Bob has created, called “Migration,” on the Titanic1 server.*

*If the current computer name is found in the file, the script will rename the workstation using the new computer name referenced in the file. If the current computer name is not found, the script will just continue with the current name.*

## Step 5 - Existing Domain



**ForensiT User Profile Wizard Deployment Kit - Step 5 of 10**

**Existing Domain**  
Enter existing domain information.

Are you migrating from an existing Windows domain?

Yes  
 No

Enter existing domain name:  
TITANNIC

Accounts to Migrate

Migrate all matching account profiles.  
 Only migrate logged on user

< Back   Next >   Cancel   Help

### Are you migrating from an existing Windows domain?

Yes or No. If yes, you must enter the name of the existing domain in the “Enter existing domain name” textbox. If you are migrating from a Novell network, you should choose No.

### Enter existing domain name

The name of the existing Windows domain.

### Accounts to Migrate

The User Profile Wizard Deployment Kit can generate a script to migrate just the profile of the currently logged on user, or all the profiles on the machine. Select the option that best suits your environment.

*Bob is migrating from an existing NT 4.0 domain, so he enters the existing domain name which is TITANNIC. He also has some shared workstations, so he chooses to migrate all account profiles.*

## Step 6 - User Account Options



**ForensiT User Profile Wizard Deployment Kit - Step 6 of 10**

**User Account Options**  
Choose user account migration options

Use lookup file to get new account names.

Enter lookup file path:

Do not set new account as default logon.

Do not remove original profile from machine profile list after migration.

Disable existing user account after migration.

Delete existing user account after profile migration.

Do not display error messages.

< Back   Next >   Cancel   Help

### Use Lookup file to get new account names

The VBScript that the User Profile Wizard Deployment Kit generates is capable of looking up the new user account name in a simple comma-separated text file (a .CSV file.) Items in the .CSV file just need to be entered as follows:

```
User1,New_UserName1
User2,New_UserName2
```

If your users have different account names on the new domain, check the “Use Lookup file” checkbox.

### Enter lookup file path

If you check the “Use Lookup file” checkbox, the “Enter lookup file path” textbox becomes active. Type the path to the lookup file in the textbox, or click the browse button to select the file.

Remember that the lookup file needs to be accessible by the user who is logged onto the workstation. For this reason, it should be on a network share on the **old** domain - or on the old Novell network if you are migrating from Novell. All users will need read access to the share. You should also avoid using mapped drive paths: use UNC paths instead.

**Do not set new account as default logon**

Do not set the domain account as the default logon.

**Do not remove original profile from machine profile list after migration**

The User Profile Wizard does **not** share profiles by default. The User Profile Wizard is primarily a migration tool; this means that it will configure a user's existing profile so that it will be used by their new account. The user's old account will no longer use the profile. If you want the original account to continue to use the profile you must check this checkbox.. (Before doing this, you may want to refer to "Windows creates a temporary profile" in the "Troubleshooting" section below.)

Note that if you do check this checkbox there will be two entries in the machine profile list (one for the new user account and one for the original user account) both pointing to the same profile. Sometimes, this can be confusing. For example, if someone goes back and deletes the profile for the original user account, the profile for the new user account will be deleted as well: it is the **same** profile.

**Disable existing user account after migration**

Disable the local account when migration is completed.

This option is only available if you are migrating local user accounts: it will be grayed out if you are migration from an existing domain.

**Delete existing user account after migration**

Disable the local account when migration is completed.

This option is only available if you are migrating local user accounts: it will be grayed out if you are migration from an existing domain.

**Do not display error messages**

Do not show the logged on user any User Profile Wizard error messages. (This is the default setting.)

*Bob's users are keeping their existing user account names. He just accepts all the default values on this page.*

## Step 7 – Run Options



**Run Options**  
Select options for running User Profile Wizard.

You can specify a local administrator account to run User Profile Wizard. If the workstation is already joined to a domain, this can be a Domain Admin account such as FORENSIT\Administrator.

Enter account name:  
TITANNIC\Administrator

Enter Password:  
XXXXXXXXXX

If User Profile Wizard will be run from a network share, enter the path here:  
\\Titannic1\Migration

Copy files to local machine

< Back    Next >    Cancel    Help

### Enter Account name

The User Profile Wizard needs to run in the security context of a local Administrator account. If all your users have Administrator rights to their machines, you don't need to fill in the "Enter account name" textbox. However, in most circumstances you will need to provide the name of an account with local Administrator rights here. This could be a local account, or it could be a domain administrator account if you are migrating from an existing domain.

To specify a domain admin account, enter the account name in the format OLD\_DOMAIN\Username.

**Note:** If you specify a local account as the local administrator account, and you want to run a "Follow on" script (see Step 9) the script will **exclude** the account's profile will from the migration.

**Enter Password**

Type the password for the account. The Deployment Kit will automatically encrypt the password for you. Blank passwords are not permitted.

**Network share**

If you are running an Enterprise migration you will usually want to run the User Profile Wizard executable file from a network share. Click the “Browse” button to select the network share.

**Copy files to local machine**

ForensiT strongly recommends that the migration script copies the files required for the migration from the network share to the local machine before the migration is run. The files required are Profwiz.exe, Profwiz.exe.manifest, and any “Follow On” script or executable. (See “Follow on Script” below.)

In most circumstances, User Profile Wizard will run in two different security contexts during the migration: the security context of the logged-on user, and the security context of the local administrator account. Experience has taught us that copying the files locally avoids confusion over security permissions and improves reliability. The script will remove any files copied when it is complete.

Check the checkbox to copy files locally. This is the default.

*Bob is going to use a domain administrator account from his company’s existing TITANNIC domain to run User Profile Wizard in the security context of a local administrator account. He enters TITANNIC\Administrator in the “Enter account name” textbox. Bob’s migration files are on the “Migration” share on the Titanic1 server, so he clicks the “Browse...” button to select the share. He leaves the “Copy files to local machine” checkbox checked.*

## Step 8 - Script Options



**ForensiT User Profile Wizard Deployment Kit - Step 8 of 10**

**Script Options**  
Select options for running the migration script.

Enter the name of the script file to be created:

Create Log file.  
 Enter Log File path:

Create flag file on successful migration.  
 Enter flag file path:

Enable Script Debugging Messages

< Back    Next >    Cancel    Help

### Enter the name of the script file to be created

This is the name of the VBScript that the User Profile Wizard Deployment Kit will create. By default the Deployment Kit creates a script called “Migrate.vbs” in the Deployment Files folder.

### Create Log File

Get User Profile Wizard to write the results of a migration to a log file. This is the default.

This is highly recommended. Should you ever need to contact ForensiT Support regarding a migration issue, we will always ask you for your log file.

### Enter the Log File path

If the “Create Log file” checkbox is checked, the “Enter the log file path” textbox will be active. By default a log file called “Migrate.log” is created in the workstation’s

“Shared Documents” folder – typically, “C:\Documents and Settings\All Users\Documents.” However, the log file can be created anywhere.

#### **Create Flag file on successful migration**

By default, the migration script generated by the Deployment Kit will create a “Flag” file to indicate that a machine has been successfully migrated. Should the script be run again, it will check whether this flag file exists and will exit if the flag file is found; this prevents profiles being needlessly re-migrated. It is not recommended that you change this setting.

#### **Enter flag file path**

If the “Create Flag file on successful migration” checkbox is checked, the “Enter flag file path” is activated. If you chose to migrate all the profiles on the machine (See “Step 5 - Existing Domain” above) the flag file will be created in the workstation’s “All Users\Application Data” folder by default. If you chose to only migrate the logged on user, the flag file will be created in the user’s “Application Data” folder.

It is not recommended that you change these flag file locations. If you want to create a record of which workstations have been migrated on, say, a network share, you should use a different mechanism.

#### **Enable Script Debugging Messages**

The migration script that the Deployment Kit creates produces a lot of useful debugging information that is shown in the form of message boxes. When you are first creating a script, is highly recommended that you leave this checkbox checked so that you can see what is going on.

The checkbox causes the Deployment Kit to create the following line in the script:

```
blnDebug=true
```

You can easily set this to:

```
blnDebug=false
```

when you are ready to deploy the script. This means that the script will run silently, and your users will not see any of the debugging messages.

*Bob wants to create his workstation log files on his “Migration” network share in the “Logs” folder. He enters the log file UNC path in the “Enter the log file path” textbox. The User Profile Wizard Deployment Kit will automatically configure the script to add the machine name to the log file name when writing a log file to a UNC network path, for example WORKSTATION1\_Migrate.log ; this is so that one log file is created per workstation.*

## Step 9 – Follow on Script



User Profile Wizard has the ability to run any Windows Script or executable in the security context of the local administrator account you specify.

**Follow on Script**  
Specify a script or program to run after the migration

User Profile Wizard can run a script or program after the migration is complete using the local Administrator credentials you have specified.

Enter the path of the script or program:

Run after migration is complete.  
 Run after migrating each profile.

< Back    Next >    Cancel    Help

### Enter the path to the script or program

To run a Windows Script or executable, click “Browse...” and select the file.

### Run after migration is complete/Run after migrating each profile

The Deployment Kit can configure User Profile Wizard to run the script or executable after the workstation migration is complete, or after each user profile is migrated if you are migrating all the profiles on a machine.

**Note:** Step 9 will not be available if you have not specified a local administrator account in Step 7.

*Bob wants to make some configuration changes to his company’s workstations and has created a script called “Follow-on.vbs” to make the changes. He clicks the “Browse” button and selects the Follow-on.vbs file on his “Migration” share. Because Bob choose*

## THE USER PROFILE WIZARD DEPLOYMENT KIT

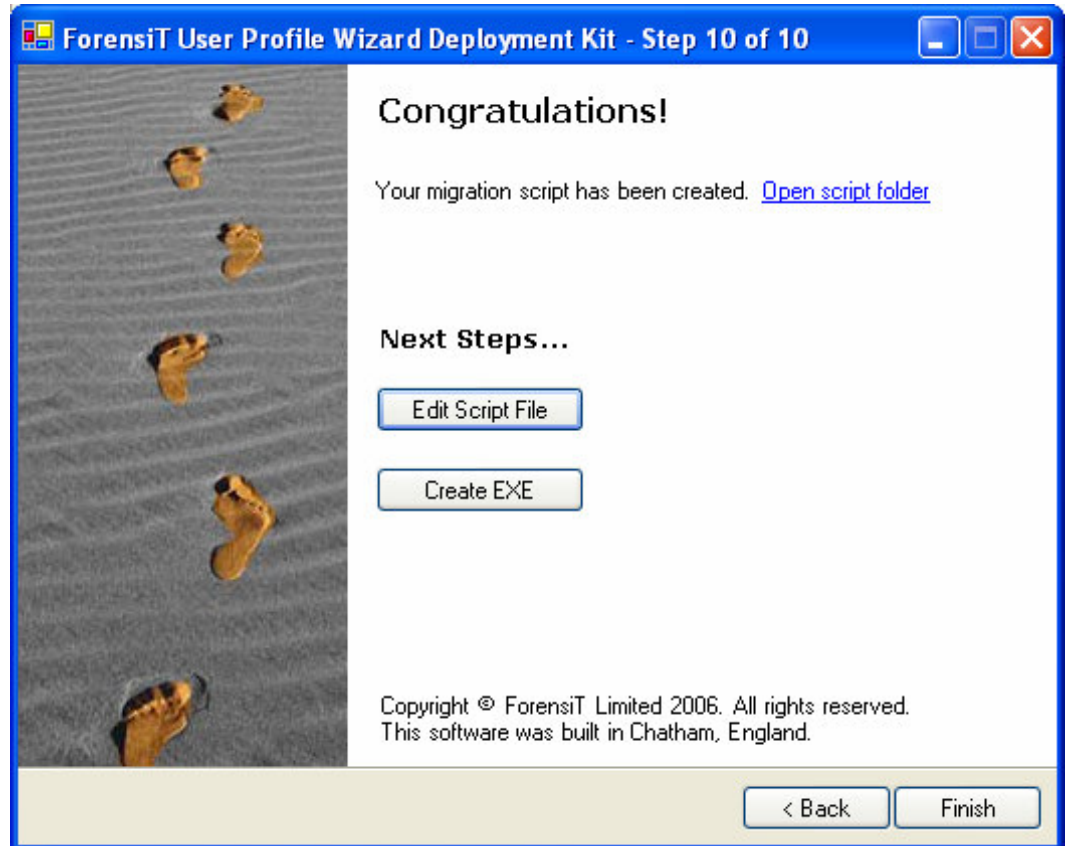
*to copy the migration files locally in step7, the migration script will copy the follow on script along with the other migration files to the local machine.*

When you click Next at Step 9, or at Step 8 if you did not specify a local administrator account, the User Profile Wizard Deployment Kit will ask you if you are ready to create the migration script.



When you click “Yes” the Wizard will write the script file

## Step 10 - Congratulations!



### Open script folder

To easily access the script that the Deployment Kit has created, click the “Open script folder” link. This will open the folder where the script resides.

### Edit Script File

To open the script for editing click the “Edit Script File” button.

### Create EXE

It is often more convenient to deploy an executable file rather than a script. The User Profile Wizard Deployment Kit can turn the script that has been created into an executable file. Click the “Create EXE” button to create the executable. The executable file will be created in the same folder as the script and have the same name.

The Deployment Kit can turn **any** Windows script into an executable. All you need to do is drag and drop the file onto the Deployment Kit. This is useful if you have tested the script with debugging messages enabled (which is recommended) and now want to

## THE USER PROFILE WIZARD DEPLOYMENT KIT

disable the debugging messages and create the final deployment file: you just need to edit the script and then drag and drop it onto the Deployment Kit.

*Bob is ready to test his script. He clicks “Create EXE” to create an executable file that can be called from his users’ existing logon script batch file on the TITANNIC domain and is good to go!*

### **Summary**

- 1. Create a share on the old domain and give Everyone read access.*
- 2. Copy Profwiz.exe and Profwiz.exe.manifest to the network share.*
- 3. Use the User Profile Wizard Deployment Kit to create a migration script and executable migration file.*
- 4. Copy the migration executable to NETLOGON share.*
- 5. Edit the logon script on the old domain to run the migration executable.*

*You can view Bob’s script at <http://www.ForensiT.com/Deploy/Scripts/Bob.vbs.txt>*

# Troubleshooting

*This chapter discusses some problems occasionally seen when running User Profile Wizard.*

## Windows creates a temporary profile

### SYMPTOMS

If two user accounts are sharing a profile and you logoff from one account and logon again using the second account, Windows reports that the user profile cannot be loaded and creates a temporary profile.

### RESOLUTION

To resolve this problem reboot between logons.

### CAUSE

The usual cause of this problem is when an application or service that is installed on the machine does not properly release resources, such as registry resources, when the user logs off. When this occurs the user's profile cannot be unloaded. In these circumstances, if a user is logged on with, say, their local computer account, and they log off and attempt to logon with their domain account which shares their local account profile, Windows is unable to load the profile because it is already in use. The only thing that Windows can then do is load a temporary profile.

This is a fairly well known problem. There is a Microsoft article here: <http://support.microsoft.com/default.aspx?scid=kb;en-us;837115>

User Profile Wizard is primarily a migration tool: it allows an existing profile to be used by a different user account. However, if a profile needs to be used regularly by more than one user, we would recommend that you use our User Profile Manager product. User Profile Manager has functionality built in which minimizes the need for Windows to create temporary profiles when a profile is in use. You can find details of User Profile Manger at <http://www.forensit.com/Profman/>

## Finding Domain Controller Fails/ "The RPC server is unavailable"

### SYMPTOMS

When you run the User Profile Wizard, the Wizard reports that it cannot find the domain controller for the domain, or the migration fails because "The RPC server is unavailable".

### RESOLUTION

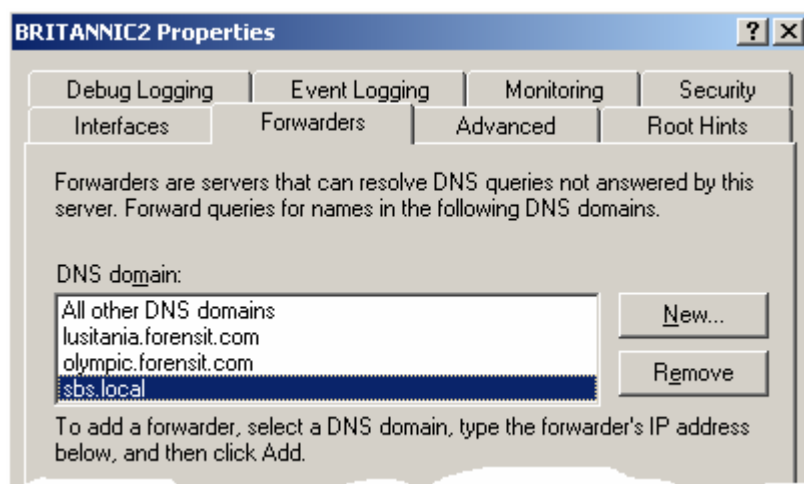
There is probably a DNS configuration problem. You need rectify the problem so that the Wizard can correctly resolve the new Domain Controller name.

### CAUSE

It sometimes happens that a new domain is added to a network without the existing domain (or domains) being reconfigured. Commonly, if there is an existing DNS server, there is no "Forwarders" entry pointing to the DNS server for the new domain.

On Windows 2003 Server you can add a new Forwarder entry for the new domain as follows.

1. Run dnsmgmt. (DNS from the "Administrative Tools" menu.)
2. Select the existing DNS server.
3. Double-click "Forwarders" in the right-hand pane.
4. Click "New.." and add a new Forwarder entry for the new domain.



# End User License Agreement

## END-USER LICENSE AGREEMENT

**IMPORTANT-READ CAREFULLY:** This End-User License Agreement ("EULA") is a legal agreement between you (an individual or a single entity) and ForensiT for the ForensiT User Profile Wizard software later referred to as the 'SOFTWARE'. By installing, copying, or otherwise using the SOFTWARE, you agree to be bound by the terms of this EULA. If you do not agree to the terms of this EULA, do not install or use the SOFTWARE.

## SOFTWARE LICENSE

The SOFTWARE is protected by copyright laws and international copyright treaties, as well as other intellectual property laws and treaties. The SOFTWARE is licensed, not sold.

1. **GRANT AND TERM OF LICENSE.** ForensiT grants you a personal, non-exclusive, non-transferable and royalty-free right to install and use one copy the SOFTWARE on a single computer (workstation or server) and to make a complete copy of the installed SOFTWARE for backup purposes. This License shall continue in effect until terminated by ForensiT, but shall terminate immediately at any time you fail to comply with the limitations set forth in this License.

2. **DESCRIPTION OF OTHER RIGHTS AND LIMITATIONS.** All rights of any kind in the SOFTWARE which are not expressly granted in this License are entirely and exclusively reserved to and by ForensiT. You may not rent, lease, modify, alter, translate, reverse engineer, disassemble, decompile or create derivative works based on the SOFTWARE, or remove any proprietary notices or labels that it contains.

3 **CHANGED TERMS.** ForensiT shall have the right to change or add to the terms of this License at any time and to change, discontinue, or impose conditions on any aspect of the SOFTWARE. Such changes shall be effective upon notification by any means reasonable to give you actual or constructive notice or upon posting of such terms on the SOFTWARE.

4. **NO WARRANTIES.** ForensiT expressly disclaims any warranty for the SOFTWARE. TO THE MAXIMUM EXTENT PERMITTED BY APPLICABLE LAW, THE SOFTWARE AND ANY RELATED DOCUMENTATION IS PROVIDED "AS IS" WITHOUT WARRANTIES OR CONDITIONS OF ANY

## END USER LICENSE AGREEMENT

KIND, EITHER EXPRESS OR IMPLIED, INCLUDING, WITHOUT LIMITATION, THE IMPLIED WARRANTIES OR CONDITIONS OF MERCHANTABILITY, FITNESS FOR A PARTICULAR PURPOSE, OR NONINFRINGEMENT. THE ENTIRE RISK ARISING OUT OF USE OR PERFORMANCE OF THE SOFTWARE REMAINS WITH YOU.

NO LIABILITY FOR DAMAGES. To the maximum extent permitted by applicable law, in no event shall ForensiT or its suppliers be liable for any damages whatsoever (including, without limitation, damages for loss of business profit, business interruption, loss of business information, or any other pecuniary loss) arising out of the use of, or inability to use, this ForensiT product, even if ForensiT has been advised of the possibility of such damages. Because some states/jurisdictions do not allow the exclusion or limitation of liability for consequential or incidental damages, the above limitation may not apply to you.

5. GENERAL . This License constitutes the entire agreement between you and ForensiT with respect to the SOFTWARE and supersedes any other agreement written or oral. If any provision of this License is held unenforceable, that provision shall be enforced to the maximum extent permissible so as to give effect the intent of this License, and the remainder of this License shall continue in full force and effect. This License shall be governed by the laws of the United Kingdom.

